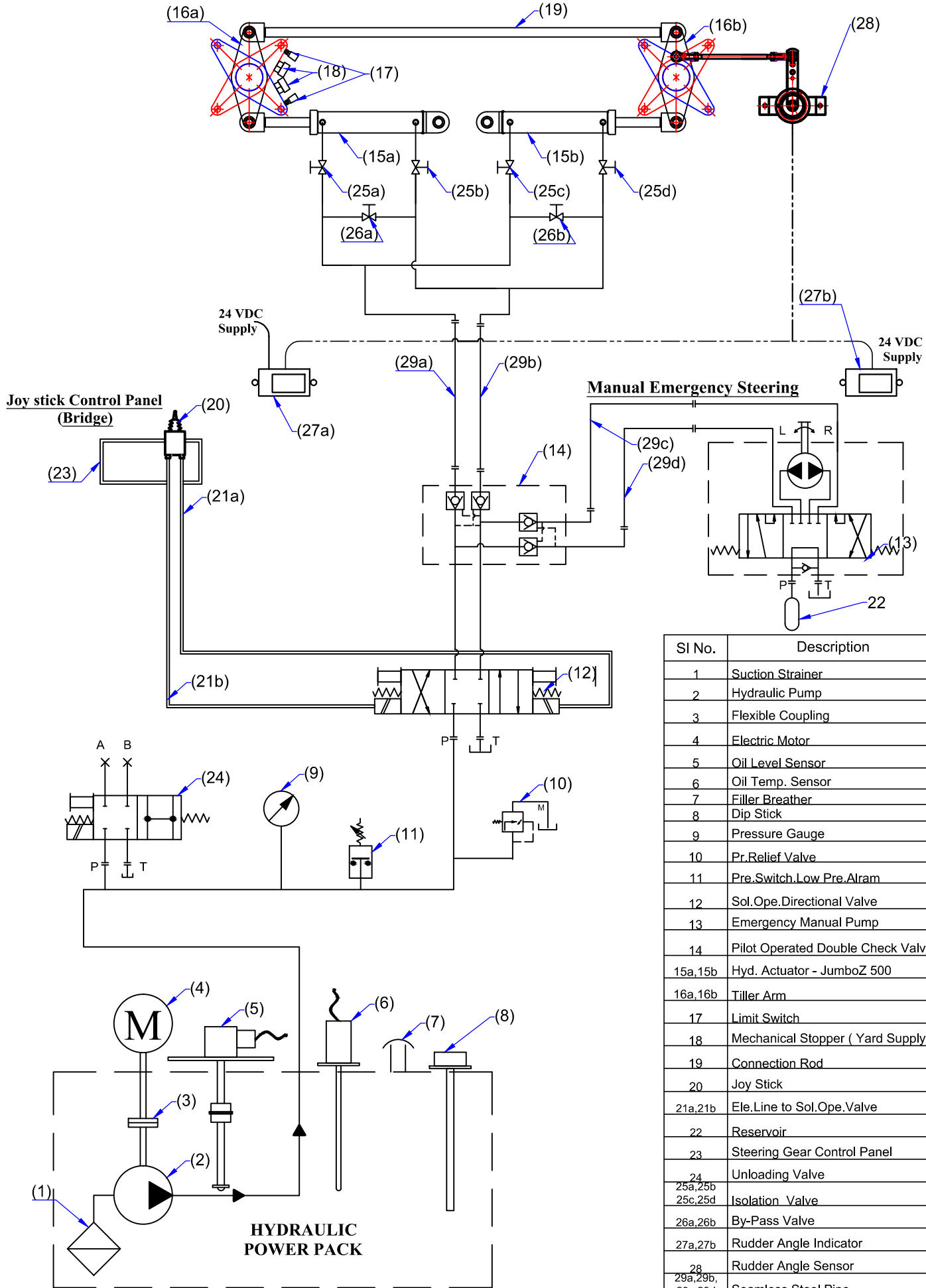


# Electro-Hyd. Circuit - JumboZ-500E



SI No.	Description
1	Suction Strainer
2	Hydraulic Pump
3	Flexible Coupling
4	Electric Motor
5	Oil Level Sensor
6	Oil Temp. Sensor
7	Filler Breather
8	Dip Stick
9	Pressure Gauge
10	Pr.Relief Valve
11	Pre.Switch.Low Pre.Alram
12	Sol.Ope.Direction Valve
13	Emergency Manual Pump
14	Pilot Operated Double Check Valve
15a,15b	Hyd. Actuator - JumboZ 500
16a,16b	Tiller Arm
17	Limit Switch
18	Mechanical Stopper ( Yard Supply )
19	Connection Rod
20	Joy Stick
21a,21b	Ele.Line to Sol.Ope.Valve
22	Reservoir
23	Steering Gear Control Panel
24	Unloading Valve
25a,25b	Isolation Valve
25c,25d	Isolation Valve
26a,26b	By-Pass Valve
27a,27b	Rudder Angle Indicator
28	Rudder Angle Sensor
29a,29b	Seamless Steel Pipe
29c,29d	Seamless Steel Pipe



**MAC ♦ N ♦ HOM SYSTEMS**  
**KOCHI - 20**

**DESIGNATION**

Electro-Hydro. Circuit Twin Rudder  
with Emer.Steering - JumboZ-500E

**DWG. No.**

MHS-1304

**DATE**

19.11.2021